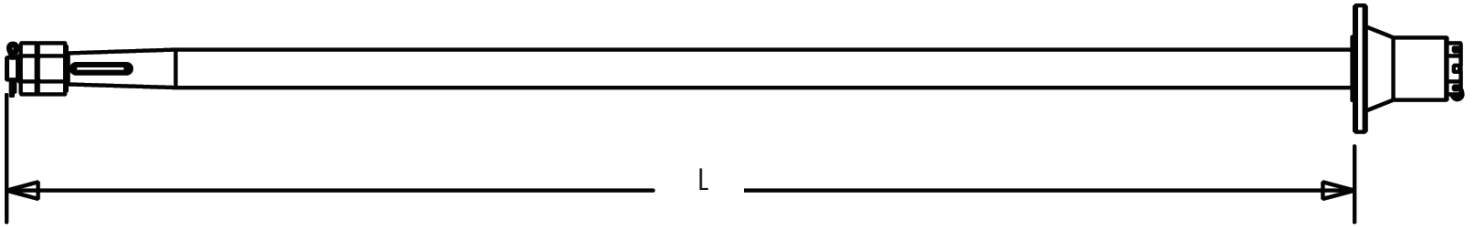


# V- DRIVE WITH REVERSE COUPLER



## GENERAL SHAFT SPECS NEEDED

Shaft Dia. : \_\_\_\_\_

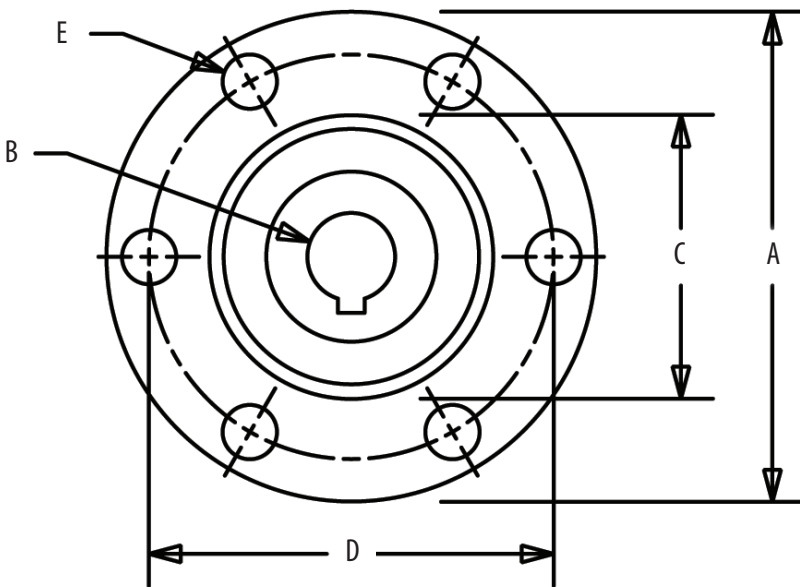
Assembled Length (L): \_\_\_\_\_

Material Grade: 17 19 22 22HS

Keyway Size (Coupler End): \_\_\_\_\_

Nuts & Keys: Yes No

Fit: Loose Fit or Tight Fit



## GENERAL COUPLER SPECS NEEDED

Flange O.D. (A): \_\_\_\_\_

Bore/Shaft Dia. (B): \_\_\_\_\_

Register Dia. (C): \_\_\_\_\_

Male or Female

Bolt Circle (D): \_\_\_\_\_

Dia. of Bolts (E): \_\_\_\_\_

Number of Bolts: \_\_\_\_\_

Bore: Tapered or Straight

Transmission Designation: \_\_\_\_\_

Your Company: \_\_\_\_\_  
 Your Name: \_\_\_\_\_  
 Phone: \_\_\_\_\_  
 Your Email: \_\_\_\_\_  
 Boat Manufacturer: \_\_\_\_\_  
 Year: \_\_\_\_\_ Boat Length: \_\_\_\_\_

<b>MARINE HARDWARE</b> <small>INC.</small>	
Redmond, WA Phone: (800) 526-5971 FAX: (425) 869-1232	Ormond Beach, FL Phone: (386) 677-0687 FAX: (386) 676-3869
Email: <a href="mailto:info@marinehardware.com">info@marinehardware.com</a>	